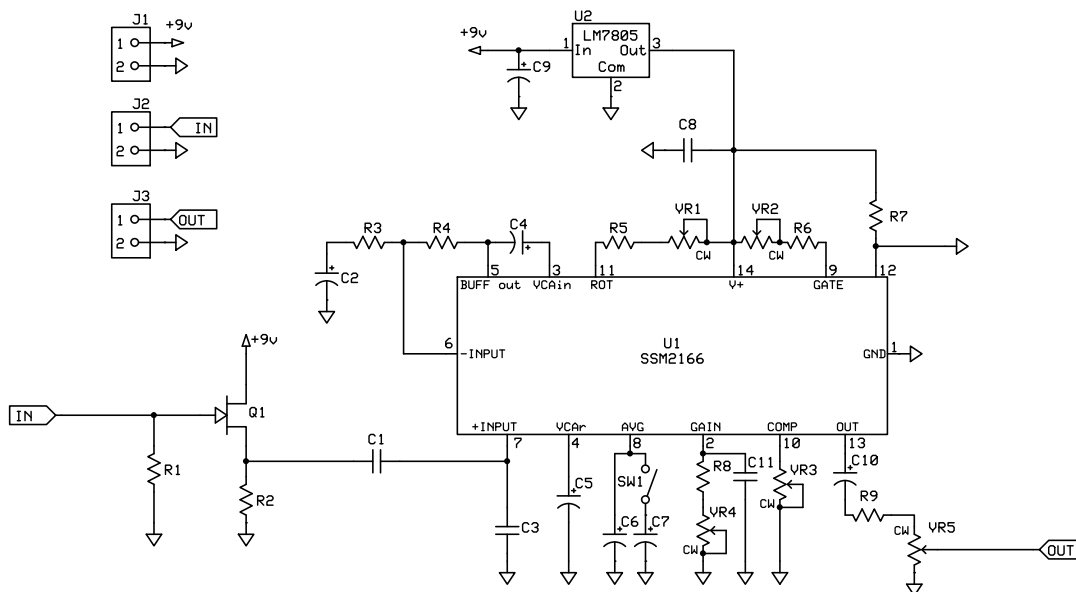


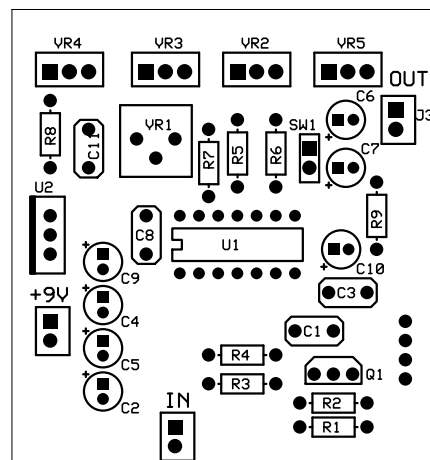
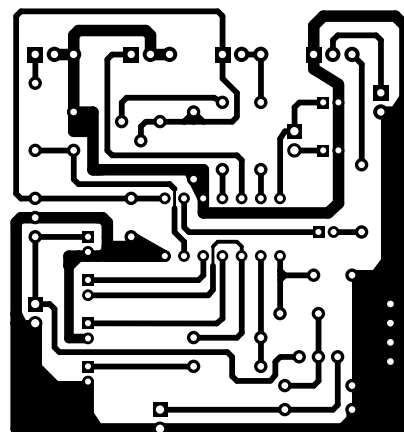
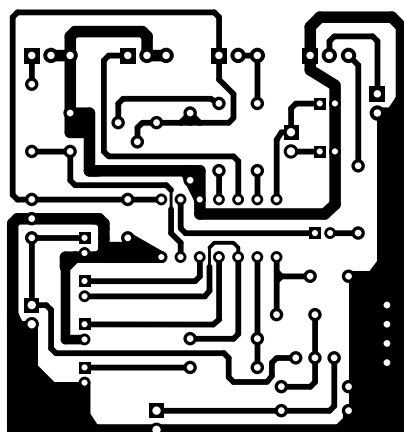
Modified Quick and Dirty Compressor

Based on the SSM2166 datasheet, The original Q&D Compressor from Jack Ormon's site <http://www.muzique.com/ssm2166.htm> and suggestions from Mark Hammer posted on www.diystompboxes.com

PCB Layout Copyright 2010 Matt Armstrong. For personal, non-commercial use only.



C1	0.1u
C2	1u
C3	47p
C4	10u
C5	10u
C6	2.2u
C7	10u
C8	0.1u
C9	10u
C10	1u
C11	0.01u
J1	+9V/Gnd
J2	Input/Gnd
J3	Output/Gnd
Q1	MPF102
R1	1M5
R2	3k9
R3	39k
R4	10k
R5	1k
R6	1k
R7	100k
R8	470R
R9	1k
SW1	SPST switch (Attack/Decay Time)
U1	SSM2166
U2	LM7805
VR1	50k B (Limiter/"rotation" trimpot)
VR2	1M B (Noise Gate)
VR3	50k B (Compression Ratio)
VR4	5k B (Gain)
VR5	10k A (Master volume)



Note: The IN, OUT and +9V connections (J1-3) all have a ground connection provided. The square pad is the signal/voltage pin and the round pad is ground. Use of the ground pins is optional as long as the board is grounded in at least one location. Four additional ground pads are provided. For off-board pots the square pad is lug 1 (CCW).